

Waveguide

W8LAP / r

146.620 - 100 Hz

442.750 + 123 Hz

Lapeer County Amateur Radio Association

Club Founder: Hollis Hayes W8ACD

Edition for **August 2012**

***** The next club meeting will be held on Tuesday, August 14th, 2012 starting @ 5:30 pm in the west pavilion of Cramton Park (bring some gear) *****

ARES Net

*Every Tuesday at 8:00 pm on 146.620 - with 100 Hz PL
(except club meeting nights)*

Thursday Night Net

Every Thursday at 8:00 pm on 442.750 + with 123 Hz PL

Meetings


LCARA meetings are held the second Tuesday of each month in the Lapeer County Central Dispatch Center (911), 2332 W. Genesee St., Lapeer, MI at 7:30 pm

Newsletter

Items for the newsletter may be called in to the editor at 810-793-4986 or emailed to kevinboxey@hotmail.com. The deadline for submission is the 20th of each month.

Website: <http://www.w8lap.com>

Facebook: Lapeer County Amateur Radio Association

August						
Sun	Mon	Tue	Wed	Thu	Fri	Sat
			1	2 ARES net 442.750+ 123 Hz PL at 8 pm	3	4 LTZ at 1:00 pm
5 D3 net 145.31+ 131.8 Hz PL at 6:30 pm	6	7 ARES net 146.620+ 100 Hz PL at 8 pm	8	9 ARES net 442.750+ 123 Hz PL at 8 pm	10	11
12 D3 net 145.31+ 131.8 Hz PL at 6:30 pm	13	14 LAPARA club meeting 7:30 pm	15	16 ARES net 442.750+ 123 Hz PL at 8 pm	17	18 T&C at Brian's Restaurant on M-24 6CRC license test Baker College room 5-103 at 9:30 am
19 D3 net 145.31+ 131.8 Hz PL at 6:30 pm	20	21 ARES net 146.620+ 100 Hz PL at 8 pm	22	23 ARES net 442.750+ 123 Hz PL at 8 pm	24	25 CRIM race Flint
26 D3 net 145.31+ 131.8 Hz PL at 6:30 pm	27	28 ARES net 146.620+ 100 Hz PL at 8 pm	29	30 ARES net 442.750+ 123 Hz PL at 8 pm	31 	
Phases of the moon: 1:○ 9:● 17:● 24:● 31:○						

13th Annual

SHOP & SWAP

Sunday, August 19, 2012 at 8:00 AM to 11:30 AM

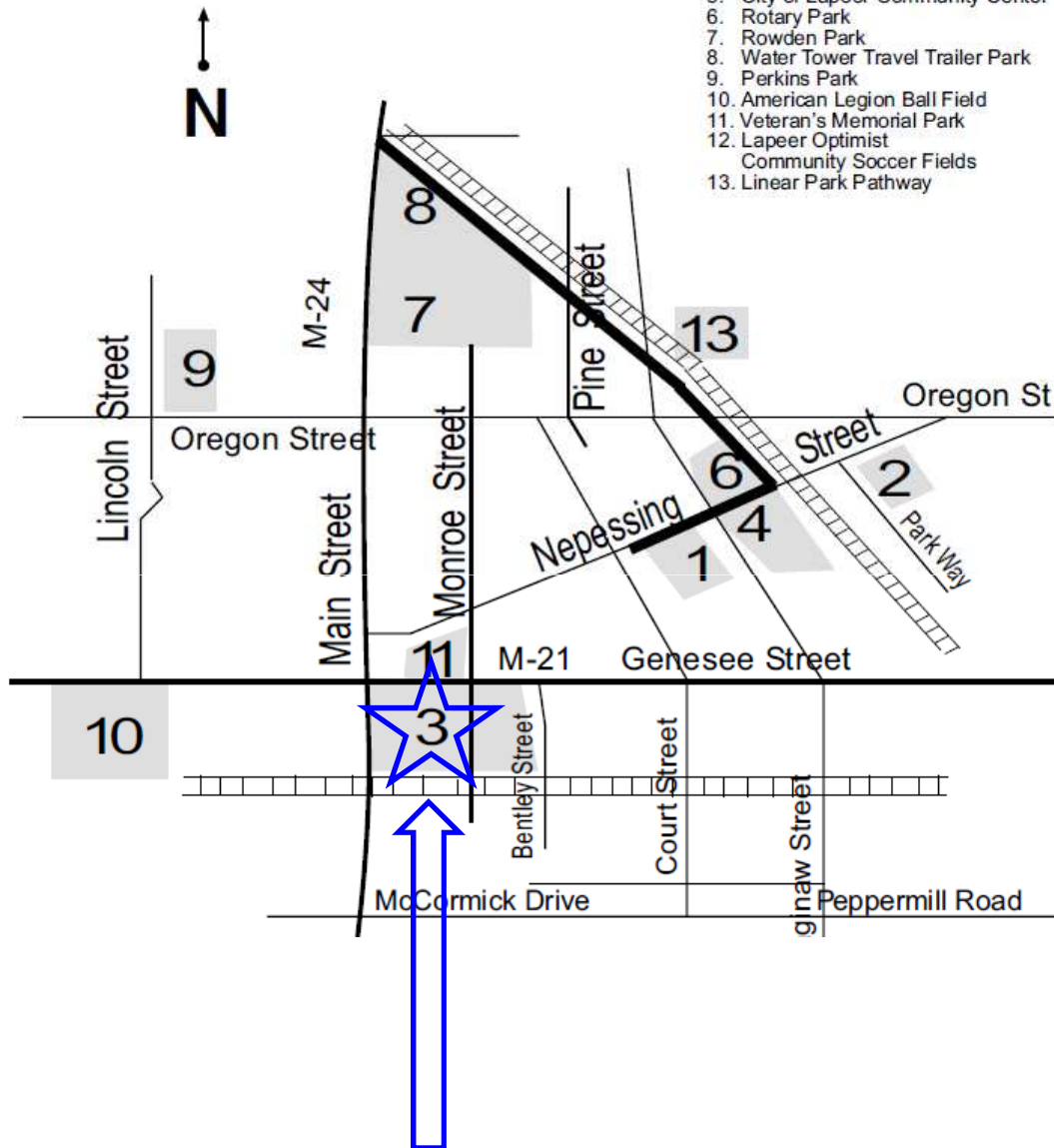
NEW LOCATION!

LAPEER WEST SENIOR HIGH SCHOOL, 170 MILLVILLE Rd. LAPEER, MI., 48446

PARK LOCATIONS

Park Legend

1. Annrook Park
2. Audubon Park
3. Cramton Park (East & West)
4. East Annrook Park
5. City of Lapeer Community Center
6. Rotary Park
7. Rowden Park
8. Water Tower Travel Trailer Park
9. Perkins Park
10. American Legion Ball Field
11. Veteran's Memorial Park
12. Lapeer Optimist Community Soccer Fields
13. Linear Park Pathway



Our August club meeting will be at Crampton park starting at 5:30 pm.

2012 2012 2012 2012 2012 2012 2012 2012 2012

September						
Sun	Mon	Tue	Wed	Thu	Fri	Sat
						1  LTZ at 1:00 pm
2 	3  LABOR DAY	4 ARES net 146.620+ 100 Hz PL at 8 pm	5	6 ARES net 442.750+ 123 Hz PL at 8 pm	7	8
9 D3 net 145.31+ 131.8 Hz PL at 6:30 pm	10	11 LCARA club meeting 7:30 pm	12	13 ARES net 442.750+ 123 Hz PL at 8 pm	14	15 T&C at Brian's Restaurant on M-24 GCRC license test Baker College room S-103 at 9:30 am
16 D3 net 145.31+ 131.8 Hz PL at 6:30 pm	17	18 ARES net 146.620+ 100 Hz PL at 8 pm	19	20 ARES net 442.750+ 123 Hz PL at 8 pm	21	22
23 D3 net 145.31+ 131.8 Hz PL at 6:30 pm SWAP - Cleveland	24	25 ARES net 146.620+ 100 Hz PL at 8 pm	26	27 ARES net 442.750+ 123 Hz PL at 8 pm	28	29
30 D3 net 145.31+ 131.8 Hz PL at 6:30 pm						
Phases of the moon: 8:  15:  22:  29: 						
Holidays and Observances: 3: Labor Day						

October						
Sun	Mon	Tue	Wed	Thu	Fri	Sat
	1	2 ARES net 146.620+ 100 Hz PL at 8 pm	3	4 ARES net 442.750+ 123 Hz PL at 8 pm	5	6
7 D3 net 145.31+ 131.8 Hz PL at 6:30 pm	8	9 LCARA club meeting 7:30 pm	10	11 ARES net 442.750+ 123 Hz PL at 8 pm	12	13
14 D3 net 145.31+ 131.8 Hz PL at 6:30 pm	15	16 ARES net 146.620+ 100 Hz PL at 8 pm	17	18 ARES net 442.750+ 123 Hz PL at 8 pm	19	20 T&C at Brian's Restaurant on M-24 GCRC license test Baker College room S-103 at 9:30 am
21 D3 net 145.31+ 131.8 Hz PL at 6:30 pm SWAP - Kalamazoo	22	23 ARES net 146.620+ 100 Hz PL at 8 pm	24	25 ARES net 442.750+ 123 Hz PL at 8 pm	26	27
28 D3 net 145.31+ 131.8 Hz PL at 6:30 pm	29	30 ARES net 146.620+ 100 Hz PL at 8 pm	31			
Phases of the moon: 8:  15:  21:  29: 						
Holidays and Observances: 8: Columbus Day (Most regions), 31: Halloween						

2012 2012 2012 2012 2012 2012 2012 2012 2012



2012 Community Service Calendar



Labor Day Operation CARE - Aug 31-Sept 3
Family Preparedness Day - Sept 8

*Please keep these dates open in your calendar
(** outside county help requested)*



Operation
CARE
Combined Accident Reduction Effort

The Labor Day Operation CARE signup is now active on W8LAP.com. Please don't wait until the last minute to reserve your shift(s).

6th Annual Family

Pledge to Prepare



Saturday, Sept. 8, 2012

9:00am until 1:00pm

Rain or Shine!

Where: The Old Court House Lawn
Downtown Lapeer

We are planning on having an amateur radio setup again this year. So, please put this date in you calendar and join us in front of the old courthouse in downtown Lapeer.

Learn to:

Make a Family Preparedness Plan
Build an Emergency Supply Kit
Have fun and play games!
Lots of Door Prizes!

Hands on demonstrations



Specialty Training



Fun Stuff for Kids



Emergency Vehicles



Lots of Information



Disaster Kit Items



Hosted by:
Lapeer County Office of Emergency Management
and
Lapeer County CERT Team
2332 W. Genesee Street, Lapeer, MI 48445 810-667-0242
www.lapeercountymemd.org

Be ready for the next emergency or disaster that strikes your community!

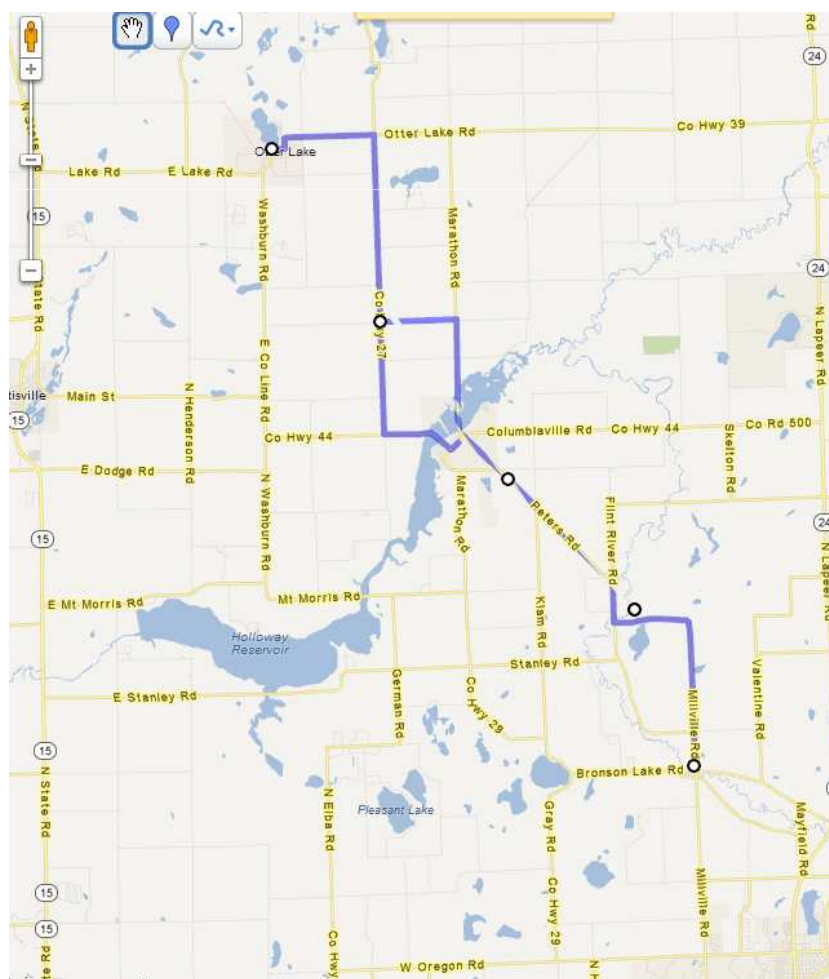
Public Service

Hey guys, just want to say a huge THANK YOU!!! It is very very frustrating on my end to not have communication to my guys when hosting an event. So this really helps us out as well as my guys out there knowing we do have that because of you guys coming out there. It gives me a little piece of mind and enables us to be prepared for the athletes when they arrive back at the venue and head out for the run.

So again THANK YOU and we look forward to working with you all in the future at Big Fish and TFL 2013.

Happy Training & Good Health,

Kenny Krell
Race Director
Gaylord, Mi.



Thank you to all of these operators for supporting the Otter Lake Triathlon on July 15th.

KD8EBY, KB8TAR,
WA8OGJ, KD8CIL,
KD8LXW, KC8PMW,
N8OSL, KD8HNX,
KD8EOA

*Don't forget to join your fellow hams on the **Tuesday** night net at 8:00 pm on 146.620 - with 100 Hz PL*



NET CONTROL SCHEDULE

07 Aug - KB8TAR
14 Aug - no net
21 Aug - KD8EBY
28 Aug - KD8EOA
04 Sept - KB8TAR



A COM Port Too Far

I recently spoke with a ham who was frustrated with a piece of *Windows* software. He wanted to use the software to program his transceiver's memory channels, but the software setup menu needed to know which COM port it should use to communicate with the radio.

Unfortunately, the software had been written back in the days when computers communicated with the outside world through a limited number of serial ports. Today, serial ports have gone the way of the dinosaurs and have been replaced by USB ports. Normally this isn't an issue. If you need a traditional serial connection, you pick up a handy serial-to-USB adapter. When you plug in the adapter, *Windows* creates a *virtual* COM port through which the software can communicate. All is well ... or maybe not.

His particular piece of software used a drop-down menu to present the list of COM ports it would recognize. The list consisted of COM 1, COM 2, COM 3 and COM 4. The serial-to-USB adapter, however, was communicating through virtual COM port 11. My friend was out of luck (he used a stronger, unprintable term).

Fortunately, there is a solution.

The first step in the journey is to go to *Windows* Control Panel and find *Device Manager*. In *Device Manager*, hunt for the word *Ports* in the device list and click the little arrow beside it. See Figure 1 and you'll notice a USB Serial Port, which is already set to COM 2 because, as it turns out, I had a similar software issue on my station PC that I resolved in the same way. For now let's assume the USB Serial Port is COM 11 or something similar.

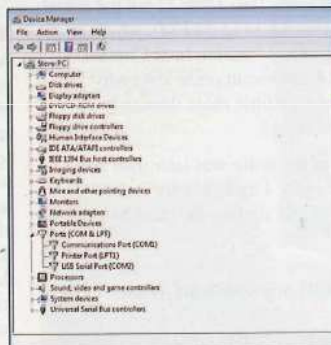


Figure 1 – The list of active ports in *Windows* Device Manager, including a USB Serial Port.

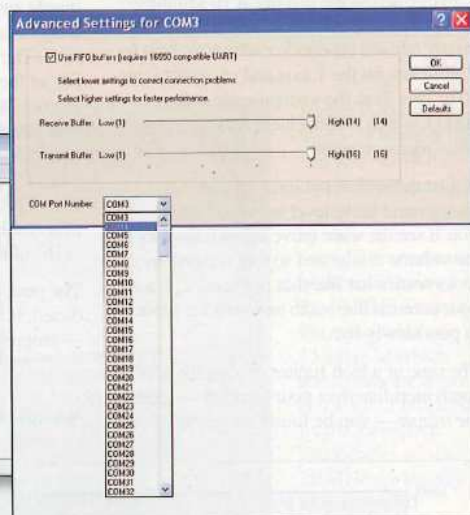
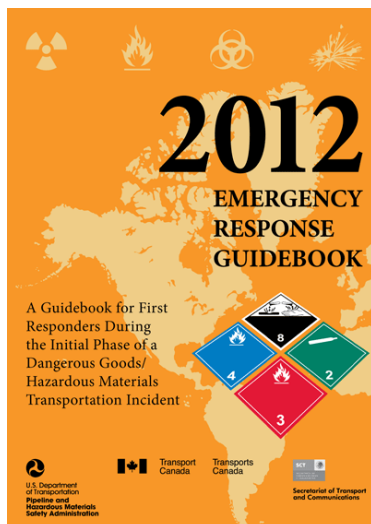


Figure 2 – By clicking on the *Advanced* button under Port Settings you can access the menu that allows you to change the COM port number.

Double click on the USB Serial Port and then click the *Port Settings* tab. A new window pops open and you'll see a button labeled *Advanced* (don't let that scare you). Click on *Advanced* and you'll be greeted with yet another window (Figure 2). In this window you'll find a drop-down menu that will allow you to renumber the port. If your software needs to "see" COM 4 and you don't see COM 4 elsewhere in the Device Manager Ports list, select COM 4 in the drop-down menu and then click OK (and keep clicking OK all the way back out to Device Manager).

What was once virtual port COM 11 is now virtual port COM 4. Select COM 4 in the software menu and you're all set. (And so was he.)

Just in case you missed it. This information was in a recent QST issue. This was exactly the information some of us packet guys needed earlier this year.



For those of you that are interested the new 2012 ERG book is available in pdf format at:

<http://phmsa.dot.gov/hazmat/library/erg>

PHMSA
U.S. Department of Transportation
Pipeline and Hazardous Materials
Safety Administration

[Careers](#) | [Contact Us](#) | [FAQs](#) | [Site Map](#)

[Go](#)
Advanced Search

[For the Public](#) | [Hazmat Safety Community](#) | [Pipeline Safety Community](#) | [Briefing Room](#) | [Doing Business with PHMSA](#)

- [About Us](#)
- [Calendar](#)
- [Contact Us](#)
- [Data & Statistics](#)
- [Electronic Services](#)
- [Field Operations](#)
- [Grants](#)
- [Hazardous Materials Information Center](#)
- [Incident Reporting](#)
- [International Standards](#)
- [Interpretations](#)
- [Library](#)
- [NTSB Safety Recommendations](#)
- [Registration](#)
- [Regulations](#)
- [Risk Management](#)
- [Safety Advisory Notices](#)
- [Security](#)
- [Special Permits & Approvals](#)
- [Training & Outreach](#)

[Home](#) » [Hazmat Safety Community](#) » [Library](#)

Emergency Response Guidebook (ERG)

Overview

...Helps You Find Emergency Procedures Quickly

The Emergency Response Guidebook (ERG) is developed jointly by the US Department of Transportation (DOT), Transport Canada, and the Secretariat of Communications and Transportation of Mexico (SCT). The ERG is intended to be used by firefighters, police, and other emergency services personnel who may be the first to arrive at the scene of a transportation incident involving hazardous material. It is primarily a guide to aid first responders in (1) quickly identifying the specific or generic classification of the material(s) involved in an incident, and (2) protecting themselves and the general public during the initial response phase of the incident. The ERG is updated every four years to accommodate new products and technology. DOT Distributed Over 2 Million 2012 Emergency Response Guidebooks to State Coordinators beginning in late May 2012.

DOT's goal is to place an ERG in each emergency service vehicle, nationwide, through distribution to state and local public safety authorities. To date, nearly 11 million copies have been distributed without charge to the emergency response community. Copies are made available to public emergency responders through **State Coordinators** (refer to the menu on the right) in the United States of America. In Canada, contact CANUTEC at 613-992-4624 or via e-mail at canutec@tc.gc.ca for distribution information. In Mexico, call SCT at 52-5-684-1275. Copies also are available commercially through the [GPO Bookstore](#) and other commercial vendors. For a PC download of the 2008 ERG and more information from Transport Canada please see: <http://www.tc.gc.ca/eng/canutec/guide-menu-227.htm>.

In This Article:

- [Overview](#)
- [Before an Emergency](#)
- [State Coordinators](#)
- [Argonne National Laboratory Report](#)
- [ERG Data Files \(English\)](#)
- [ERG Data Files \(Spanish\)](#)
- [ERG2008 Mobile Software Downloads](#)

Related Downloads:

- [ERG2012 Press Release](#)
- [2012 Summary of Changes from ERG2008](#)
- [ERRATA \(list of changes to the current ERG\)](#)
- [Commercial Suppliers List \(PDF\)](#)
- [Current ERG \(PDF\)](#)
- [Current Spanish ERG \(PDF\)](#)
- [Argonne National Laboratory Report \(PDF\)](#)

Related Links:

- **Video:** PHMSA deputy administrator on the 2012 ERG
- **Watch Video:** How to Use the ERG

[Home](#)

About PHMSA

- [Mission and Goals](#)

LAPEER COUNTY AMATEUR RADIO ASSOCIATION

13th Annual

SHOP & SWAP

Sunday, August 19, 2012 at 8:00 AM to 11:30 AM

NEW LOCATION!

LAPEER WEST SENIOR HIGH SCHOOL, 170 MILLVILLE Rd. LAPEER, MI., 48446

(See map on back of flier)

*** Admission: \$5.00 ***

Tables: \$8.00 in advance &
\$10.00 at the door

Mail-in form for admission & tables at
<http://www.w8lap.com>

*** Free parking ***

*** All sales inside ***

*** COFFEE & DONUTS ***

*** Electricity available ***

*** Talk-in 146.620-- ***

100 Hz PL tone

Swap info: kc1bud@arri.net



VE Testing

Bring the original and a copy of 2 forms of ID, current license, & CSCE (if any). Contact Bob, N8NE for test details at 810-653-3856.

*** NO WALK-INS ***

2012 LCARA Swap Table & Ticket Order

Please Print

Name: _____ Call Sign: _____

Address: _____

City, State & Zip _____

Phone number () _____

Tables are \$8.00 each in advance and 10.00 each on the day of the swap.

Number of tables: _____ X \$8.00 = \$ _____

Number of Tickets: _____ X \$5.00 = \$ _____

Electricity: Y N **Limited & on first reserve basis**

For mail-in form go online at www.w8lap.com

Mail to: LCARA, box 12, Hadley, MI., 48440-0012



SWAP FROM THE WEST OR EAST

Take I-69 to **exit 153** turn left onto Lake Nepessing Rd..
Go north to Davison Rd. Davison is also West Genesee turn right.
Go to Millville turn left

FROM M-24

Take Genesee Rd. M-21 west to Millville. Turn north(right) on Millville.

Lapeer County Amateur Radio Assoc.
P.O. Box 12
Hadley, MI 48440-0012

L.C.A.R.A. MEMBERSHIP APPLICATION

PLEASE PRINT:

CALL SIGN: _____ NAME: _____

ADDRESS: _____

CITY ,STATE, AND ZIP: _____

PHONE : _____ LICENSE CLASS: _____

SKYWARN NO.: _____ RACES NO: _____

ARES MEMBER YES ___ NO ___ E-MAIL ADD.: _____

ARE YOU AN A.R.R.L. MEMBER: YES ___ NO ___

L.C.A.R.A. MEMBERSHIP IS \$12.00 PER YEAR, RENEWABLE EACH YEAR ON **OCTOBER. 1ST.** FAMILY MEMBERSHIP \$20.00. ASSOCIATE MEMBERSHIP \$4.00. IF YOU WISH AN AUTODIAL NUMBER FOR THE REPEATER THERE IS AN ADDITIONAL \$3.00 CHARGE. Financing available.

Lapeer County Amateur Radio Association

P.O. Box 12

Hadley, MI 48440-0012

Lapeer County Amateur Radio Association

P.O. Box 12
Hadley, MI 48440-0012

Officers

President: Kevin Boxey KB8TAR, 810-793-4986
Vice President: Tom Oliver KD8EBY, 810-247-3227
Treasurer: Bill Miller KD8VP, 810-797-5329
Secretary: Flo Haack KC8CAB, 810-793-2606

Committees and Appointees

Club Call Trustee W8LAP: Joe Medved KD8CIL
Repeater Assistants: KC1BUD, KD8EBY, KD8EOA
Skywarn Coordinator: Tom Oliver KD8EBY
Swap & Shop Chairpersons: Bill Miller KD8VP & Dan Bain KC1BUD
Meeting Refreshments: Bill Miller KD8VP
Newsletter Editor: Kevin Boxey KB8TAR
Net Manager: Tom Oliver KD8EBY
Testing Coordinator: **Volunteer needed**
County EC: Tom Oliver KD8EBY
County PIO: Dan Bain KC1BUD
County AEC: Joe Medved KD8CIL
County AEC: Kevin Boxey KB8TAR

