

Waveguide

W8LAP / r

146.620 - 100 Hz

442.750 + 123 Hz

Lapeer County Amateur Radio Association

Club Founder: Hollis Hayes W8ACD

Edition for **April 2012**

*****The next regular club meeting will be held on
Tuesday, April 10th, 2012 @ 7:30 pm*****

ARES Net

Every Tuesday at 8:00 pm on 146.620 - with 100 Hz PL

(except club meeting nights)

Thursday Night Net

Every Thursday at 8:00 pm on 442.750 + with 123 Hz PL

Meetings

LCARA meetings are held the second Tuesday of each month in the Lapeer County Central Dispatch Center (911), 2332 W. Genesee St., Lapeer, MI at 7:30 pm

Newsletter

Items for the newsletter may be called in to the editor at 810-793-4986 or emailed to kevinboxey@hotmail.com. The deadline for submission is the 20th of each month.

Website: <http://www.w8lap.com>

Facebook: Lapeer County Amateur Radio Association

Editorial Section

The President Sez:

Hello everyone. I don't know how many of you work the low bands but it seems to me that 10 and 15 meters are doing much better lately. DX contacts don't seem to be much of a problem even all the way to Japan for 15 and I am working South America on 10 m - its been years it seems the last time that was possible.

The club will be setting up a display table at this year's Skywarn training again. Please consider sitting awhile and representing your club and amateur radio. It seems we always get several people who are interested in becoming hams and will leave their contact information.

Before I forget, Lee N8LJ, will give us a review of his recent DXpedition trip at the April club meeting. I'm sure it will be as interesting as the last one (you could take this 2 ways but it is meant the good way).

See you at the meeting. Kevin KB8TAR

The VP / EC Sez:

Well, we're breaking all time temperature records already. Remember as temps rise the chances of severe weather also rises, we've had two Skywarn activations already and it's only March and the "official" tornado season doesn't begin until April.

With that the county will again begin testing the sirens the first Saturday of the month from April-October with the first being April 7 at 1 pm. At that time (if I remember this year) I'll also be testing the LiTZ. If you happen to be listening to the 2m at that time please give me a shout and let me know it went through.

Anyone interested in a class on NTS traffic message passing, formatting, and another on Net handling please let me know so that I can reserve the EOC and "draft" and instructor. Also we could use more assistance with the Tuesday night nets. If you're interested in becoming a net control operator please let me know as we have only 3 at this point.

Enough from me, see y'all at the meeting on April 10th.

73, Tom

The Repeater Trustee Sez:

It's been an interesting few months learning the ins and outs of the repeater and controllers. I'm working on the CAT 1000 programming software and hopefully will be able to make some changes to benefit the users. Some of the changes might be to control both the 2 meter and 70 cm (440) repeaters through the CAT 1000 controller which would allow voice messages on both repeaters, emergency macros, and the same control codes for both. More to come as I get more information and advice.

The old 2 meter and 220 packet stations have been removed from the repeater shack. It is being reprogrammed by KB8TAR and will be reinstalled as a remote controlled packet node on 2 meter. This will provide the county with a new node which should provide backup for the EOC and provide for linking to more of the County such as Imlay City.

Joe KD8CIL

Editorial Section

The Treasurer Sez:

Greetings to everyone. I don't have a lot to say about the treasury this month. It has been business as usual for the most part. Just the electric and phone bill, and an additional payment to our liability insurance carrier. Now I have to explain that additional payment. Since we had erratic dealings with the Center Building management last year at the swap, it was decided to find another location. We did! Lapeer West High School was applied for and a price was presented to Dan Bain and I. The only thing is Ms. T forgot to tell us that we had to put Lapeer Schools on our policy, as "additionally insured". Well that came as a surprise and when I called the agent, he told me that it was a very common way for them to get cheaper insurance, because it puts the burden on us. Not very cool I thought, but OK we have to have it to get the school. Then he laid the bomb on me that there will be additional cost. I am telling you, every time we turn around somebody is trying to get a piece of the action. OK I will get off my soapbox. The swap is still on and will be August 19, 2012. Please tell everyone you know, we need the advertising. Thank you, Bill Miller KD8VP Treasurer

The Secretary Sez:

The meeting was called to order at 7:30 with the Pledge of Allegiance to the flag and introduction of members and guest. Joe KD8CIL's wife was in and out of the hospital. No upgrades. The secretary report was given by Flo, KC8CAB. It was accepted by Jamie, KC8PMW and seconded by Tom, KD8EOA and Dan, KC1BUD. The treasurer's report was given by Bill, KD8VP. The report was accepted by Tom, KD8EOA and seconded by Dan, KC1BUD. The repeater trustees report was given by Joe, KD8CIL. The repeater is working fine. Joe said he will check the antennas. The EC report was given by Tom, KD8EBY. The tornado siren test will be the first Saturday of every month from April through October. Operation Care sign up sheet will be at the next meeting. Please help out. The club constitution was reconfirmed at the March meeting. Next packet station exercise is April 21. Kevin, KB8TAR updated the ARRL website. Break was from 7:50 to 8:04. Lee, N8LJ will give a presentation on his DXpedition to Christmas Island at the April meeting. The August meeting in the park is set up again. The repeater is staying for the near future at the school. Our lease runs through July 2013. 50/50 was won by Will, KB8YGA. A motion was made by Tom, KD8EOA and seconded by Dick, KC8VHA to close the meeting at 8:30. Flo KC8CAB







Presentation announcement

*N8LJ is giving a talk on his
2012 DXpedition at the club
meeting on April 10th.*

2012 2012 2012 2012 2012 2012 2012 2012 2012

April						
Sun	Mon	Tue	Wed	Thu	Fri	Sat
1 D3 net 145.31+ 131.8 Hz PL at 6:30 pm	2	3 ARES net 146.620+ 100 Hz PL at 8 pm	4	5 ARES net 442.750+ 123 Hz PL at 8 pm	6	7 LTZ at 1:00 pm SWAP - Lowell, MI
8 D3 net 145.31+ 131.8 Hz PL at 6:30 pm	9	10 LCARA club meeting 7:30 pm	11	12 ARES net 442.750+ 123 Hz PL at 8 pm	13	14 SWAP - Milford, MI
15 D3 net 145.31+ 131.8 Hz PL at 6:30 pm	16	17 ARES net 146.620+ 100 Hz PL at 8 pm	18	19 	20	21 MICHIGAN QSO PARTY T&C at McD's on M-24 Packet training, 8 am - 12 pm at EOC
22 D3 net 145.31+ 131.8 Hz PL at 6:30 pm	23	24 ARES net 146.620+ 100 Hz PL at 8 pm	25	26 ARES net 442.750+ 123 Hz PL at 8 pm	27	28  Arrive by 8:30 am
29 D3 net 145.31+ 131.8 Hz PL at 6:30 pm	30					
Phases of the moon: 6:○ 13:● 21:● 29:○						
Holidays and Observances: 8: Easter Sunday						

May						
Sun	Mon	Tue	Wed	Thu	Fri	Sat
		1 ARES net 146.620+ 100 Hz PL at 8 pm	2	3 ARES net 442.750+ 123 Hz PL at 8 pm	4	5 LTZ at 1:00 pm
6 D3 net 145.31+ 131.8 Hz PL at 6:30 pm	7	8 LCARA club meeting 7:30 pm	9	10 ARES net 442.750+ 123 Hz PL at 8 pm	11	12
13 D3 net 145.31+ 131.8 Hz PL at 6:30 pm	14	15 ARES net 146.620+ 100 Hz PL at 8 pm	16 Lapeer County SET	17 ARES net 442.750+ 123 Hz PL at 8 pm	18	19 T&C at McDonald's on M-24
20 D3 net 145.31+ 131.8 Hz PL at 6:30 pm	21	22 ARES net 146.620+ 100 Hz PL at 8 pm	23	24 ARES net 442.750+ 123 Hz PL at 8 pm	25 	26 
27 	28 	29 ARES net 146.620+ 100 Hz PL at 8 pm	30	31 ARES net 442.750+ 123 Hz PL at 8 pm		
Phases of the moon: 5:○ 12:● 20:● 28:○						
Holidays and Observances: 13: Mother's Day, 28: Memorial Day						

2012 2012 2012 2012 2012 2012 2012 2012 2012

2012 Community Service Calendar



Skywarn training - April 19
Lapeer March of Dimes Walk - April 28
**Lapeer County SET - May 16
Memorial Day Operation CARE - May 25-28
Beatty-Daley Challenge (5k) - June 2
**Big Fish Triathlon (Ortonville) - June 10
Field Day - June 23-24
July 4th Operation CARE - TBD
**Tri for Life Triathlon (Otter Lake) - July 15
**Imlay City Blueberry Stomp - Aug 4
CRIM race - Aug 25
Labor Day Operation CARE - Aug 31-Sept 3
Family Preparedness Day - Sept 8

*Please keep these dates open in your calendar
(** outside county help requested)*



(FREE)

2012
Tornado Spotter
Training

APRIL 19, 2012

7:00 p.m.

at

Lapeer East High
School

933 Saginaw Street, Lapeer

**PRE-REGISTRATION
OPEN UNTIL APRIL 9TH:**

<https://secure.jotform.com/form/90660356288>

For More Information on being a spotter
check out: www.crh.noaa.gov/dtx/skywarn.htm

MICHIGAN 2012 HAMFEST CALENDAR

Apr 7 - Lincoln Trail ARC Hamfest, Elizabethtown, KY
Apr 7 - ARGYL Hamfest & Computer Show, Lowell, MI
Apr 14 - Cuyahoga Falls ARC, Cuyahoga Falls, OH
Apr 14 - Milford Swap & Shop, Milford, MI
Apr 29 - Athens Hamfest, Athens, OH
Jun 2 - IRA Hamfest, Hudsonville, MI
Jun 7 - Muskegon Area Amateur Radio Council Meeting - Dale
Jun 14 - Mahoning Valley ARC Meeting - Jim
Jun 17 - Monroe Hamfest, Monroe, OH - Dale
Jul 20-21 - ARRL Board of Directors Meeting, ARRL HQ - Dale & Jim
Jul 29 - Portage ARC, Randolph, OH
Aug 4 - Ohio State Convention, Columbus, OH - Dale & Jim
Sep 23 - Cleveland Hamfest & Computer Show, Berea, OH
Oct 21 - Kalamazoo Hamfest, Kalamazoo, MI

05/05/2012 | Cadillac Amateur Radio and Computer Swap

Location: Cadillac, MI

LCARA Swap
Sunday, August 19th
Lapeer, MI

For more information see: <http://www.arrl.org/hamfests/search/>



*Don't forget to join your fellow hams on the **Tuesday** night net at 8:00 pm on 146.620 - with 100 Hz PL*

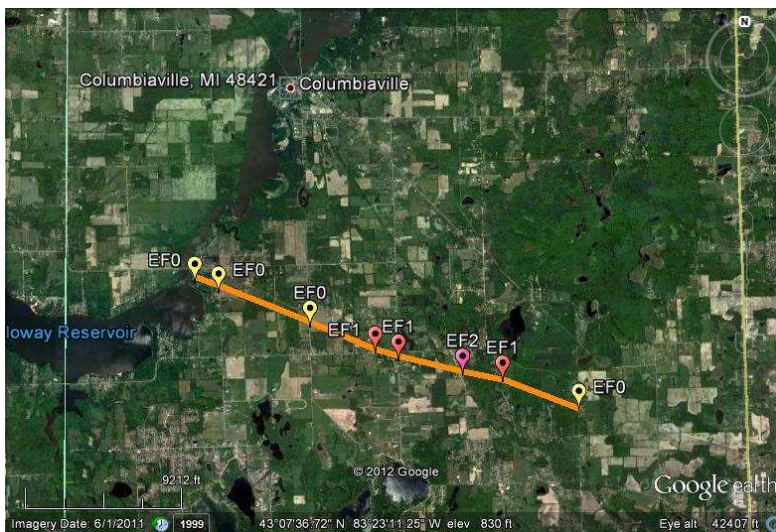


NET CONTROL SCHEDULE

03 Apr - KB8TAR
10 Apr - NO NET
17 Apr - KD8EBY
24 Apr - KC8JBK
01 May - KD8GAV
08 May - NO NET
15 May - KB8TAR
22 May - KD8EBY
29 May - KC8JBK
05 June - KD8GAV
12 June - NO NET
19 June - KB8TAR
26 June - KD8EBY

Columbiaville (Lapeer Co.) Tornado

A National Weather Service Storm Damage Survey confirmed the occurrence of a tornado in western Lapeer County, approximately 3 miles south of Columbiaville or 5 miles northwest of Lapeer. The tornado produced damage consistent with a rating of EF2, with maximum wind speeds of around 125 mph. The tornado damage path was roughly 4.5 miles long with a maximum width of 400 yards. The damage extends from near the intersection of Mt. Morris Road and German Road with a touchdown of approximately 649 PM EDT to near the intersection of Flint River Road and Millville Road by approximately 704 PM EDT. Damage along much of the path was primarily uprooted trees and minor structural damage. The most intense damage occurred along Carpenter Road, roughly one quarter mile south of Stanley Road, at 700 PM EDT. A house was shifted off the foundation and an attached garage was destroyed at this location.



Proposed Bylaw Revisions

Article IV Dues

Membership dues shall be due at the October General Membership meeting. The Executive Board, as defined in Article VII, may suspend dues for any member where it finds that undue hardship would result.

All board members (President, Vice President, Secretary, Treasurer, Repeater Trustee) shall have their membership dues paid by LCARA.

Membership dues shall be tiered as follows:

- A) \$20 for any member that does not participate in the required number of public service events or the required number of Operation CARE shifts.
- B) \$12 for any member that participates in ONE of the following; 2 public service events OR 9 hours (3 shifts) at Operation CARE (public service shall not include nets). Members that meet this criteria shall have their Christmas party costs paid by LCARA (member and one guest).
- C) Members that participate in 2 public service events AND 18 hours (6 shifts) at Operation CARE shall have their membership dues and Christmas party costs (member and one guest) paid by LCARA.

Article VIII Duties of Officers

The President shall preside over all meetings as far as possible and is responsible to the membership for the activities and growth of the Association. **The President shall update the club's information in the ARRL website at least once per calendar year.**

**** Please bring your comments on the proposed revisions above to the club meetings ****



Packet Training

The last scheduled packet class is **April 21**. The time will be 8 am - 12 noon at the EOC. We will be setting up training classes in the future for further packet training and the NTS message handling format.

I hope to see you then.

Kevin KB8TAR

Michigan Severe Weather Awareness Week, April 15-21, 2012



Michigan Committee For Severe
Weather Awareness

MCSWA Web site at www.mcswa.com



NOAA's National Weather Service Contacts



Detroit/Pontiac

NWS Office, NOAA
9200 White Lake Road
White Lake, MI 48386-1126
(248) 625-3309, Ext. 726
Contact: Richard Pollman
www.weather.gov/dtx
Richard.Pollman@noaa.gov

Grand Rapids

NWS Office, NOAA
4899 South Complex Drive, SE
Grand Rapids, MI 49512-4034
(616) 949-0643, Ext. 726
Contact: Mike Heathfield
www.weather.gov/grr
Mike.Heathfield@noaa.gov

Gaylord

NWS Office, NOAA
8800 Passenheim Road
Gaylord, MI 49735-9454
(989) 731-3384, Ext. 726
Contact: Jim Keysor
www.weather.gov/apx
James.Keysor@noaa.gov

Marquette

NWS Office, NOAA
112 Airport Drive South
Negaunee, MI 49866
(906) 475-5782, Ext. 726
Contact: Matthew Zika
www.weather.gov/mqt
Matthew.Zika@noaa.gov

Northern Indiana

NWS Office, NOAA
7506 East 850 N.
Syracuse, IN 46567
(574) 834-1104, Ext. 726
Contact: Steven Eddy
www.weather.gov/iwx
Steven.Eddy@noaa.gov

Anatomy of an "Incursion"

by Gary Pearce KN4AQ

August 10, 2001

Derek's Trucking
3102 Rockspring Church Road
Creedmoor, NC 27522-1964



SUBJECT: Warning Notice--Unlicensed Radio Operation

Dear Sir:

Monitoring information before the Commission shows that you have been operating radio-transmitting equipment without a license on frequencies in the Ten Meter Amateur Radio Service band. Your truck bearing license plate ZB 20189 was monitored transmitting on Ten Meter frequencies on July 19, 2001 at 10:30 a.m. on U.S. 1 near Cary, NC, at 2:50 p.m. on Kildaire Farm Road and from 3:00 to 3:30 p.m. from a landfill near the intersection of State Road 55 and Sunset Lake Road. Re-transmissions of Nextel two-way communications were also sent from the truck on Ten Meter frequencies.

Please be advised that operation of radio transmitting equipment without a license is a violation of Section 301 of the Communications Act of 1934, as amended, 47 U.S.C. Section 301, and will subject you to fine or imprisonment, as well as an in rem seizure of any non-certified radio transmitting equipment, in cooperation with the United States Attorney for your jurisdiction. Monetary forfeitures normally range from \$7,500 to \$10,000.

You are requested to contact me at 717-338-2502 to discuss this matter.

Derek Pleasants is a small businessman who owns a few dump trucks. These days he and his men are pretty busy hauling debris from the new beltline being built around Raleigh, NC, to a landfill in southern Wake County. They use Nextel phones for business, and some CB radios for keeping in touch and, well, goofing around.

"They're real nice CB's," Derek said. "Real expensive, with lots of power. They have a high band and a low band. You can get them at truck stops and CB shops."

And that is about all Derek knows about the Connex 4400 radios that sit on the dash of each of his trucks. Well, he knows one more thing about them now - they can get you in trouble.

Earlier this year, Derek received a letter from the FCC's Riley Hollingsworth. A warning letter, citing the fact that someone in one of Derek's trucks had been monitored talking on the 10 meter Amateur Radio band without a license. It could cost him several thousand dollars. "I'll fire the driver who did it, if I have to," Derek said.

He won't have to. The letter was only a warning, and Derek had a chat

with Riley on the phone. He still doesn't completely understand what he and his drivers have been doing wrong, but he does understand that there are some channels on his expensive CB that he can't use. Some of the 240 channels total that the Connex radio can dial.

"We went to that channel because it was quiet. Nobody else was using it," Derek said.

But somebody else was listening to it. The quiet channel was 28.085 MHz, in the low end of the 10 meter band, the cw segment. Some hams across the country listen to 28.085 and adjacent frequencies, looking for intruders. And they hear plenty.

One such team of hams in the Raleigh, NC, area was listening when two of Derek's employees were chat-

ting and goofing around while hauling a load to the landfill. As the signals faded a bit, the hams thought they were hearing skip. Then they heard what sounded like some local references, and when the signals picked up strength, the hams got a bearing and took off in that direction. Eventually they spotted one of Derek's dump trucks, and made a positive ID on one of the transmissions. The details went off to Riley, and Derek's letter, a public-record document printed in ham magazines and posted on the web, followed.

This team of hams, who need to remain anonymous, has had a few other successes. Last year, they found a fellow jamming a wide-coverage Raleigh repeater. They had been looking for this particular jammer for a long time. A letter from Riley brought both a denial... and the end to an apparent source of jamming.

The DF team does not approach their quarry when they are successful. They just document everything and send it to Washington. In the past, when they weren't so careful, they've encountered threats and even some minor damage to an automobile from irate operators.



Derek Pleasants, owner of Derek's Trucking, received a warning letter from Riley Hollingsworth for unlicensed operation in the Amateur 10 meter band

continued on next page

INCURSION continues.....

Derek, though, wasn't irate. Worried, a little, but not irate. In fact, he was most cooperative and willing to share what he knew, and didn't know, about two-way radio. "Mostly I use them with my hunting group. We don't know that much about them." Spectrum? No. Bands? No. Amateur Radio? He's heard of it. Doesn't know much about what, or where, that is.

The service technician at a local CB shop wasn't surprised. "Most of the truck drivers and hunters we sell these radios to don't know anything about that stuff," he said. "They buy them for the extra features (echo mic, roger beep), and because they're easier to repair. They're not necessarily looking for extra channels. They don't want to operate in the 10 meter band. In fact, we wish we could modify them so they *didn't* operate in 10 meters."

At first, the service tech was a bit more circumspect. No, he didn't know anything about CBers operating in 10 meters, or where the radios came from. This despite the radio sitting on a nearby shelf labeled "10 Meter Amateur Transceiver." Once assured that the *Repeater Journal* wasn't doing an exposé on that particular store, he and the store's owner gradually became more forthcoming.

THE WORLD OF "EXPORT" RADIOS

Welcome to the world of "Export" radios. New hams who have recently arrived from CB are likely to be familiar with these shady radios. Old timers might be in for a ruder awakening.

There are many radios models on the market sold as "10 meter Amateur radios." Some are SSB, some are AM, and a few, like Derek's



Channel 19 on this Connex 4400 "Export" radio, sitting on Derek's dash, can be one of 8 actual radio frequencies. One of them is 28.085 in the 10 meter band

Connex, can be operated on FM (though its stock frequency coverage stops below 29.5 MHz, so it doesn't cover the 10 meter FM band).

Few of the radios are sold to hams. They are specifically designed to be "modified" to expand their coverage below 28 MHz, where they will operate on the regular 40 CB channels, and many more, from below 26 MHz to the middle of the 10 meter band. The modification usually involves removing a resistor or two, and no surface mount stuff. Most of the radios aren't particularly high power - less than 20 watts is typical. They cost between \$150 and \$400, and are available from CB shops (which will do the mod for those who don't feel handy with a soldering iron), and truck stops (which may not do the mod, leaving the buyer with a 10 meter radio).

And dealers proliferate on the internet, where one dealer will sell the radios "peaked and tuned" for an extra \$10 to \$20. The dealer's web site explains that "peaked and tuned" means that the radio will be capable of operating out of the legal CB band, with more power than is legal on CB. It is the buyer's responsibility to make sure that operation is kept legal in the country they are going to operate in, thus the "export" designation.

Few of the radios have direct frequency readout. Most have a channel indicator which just reads between 1 and 40. For expanded coverage, the radios have a complex set of knobs and switches, like the Connex, which has a "high/low" switch, and a "band" switch. Each combination of switch positions yields 40 channels of operation somewhere in the total spectrum of the radio, somewhere between 25 and 29 MHz.

With the Connex radio, a flip of the "band" switch moves the operator from CB channel 19 (27.185 MHz) to 28.085 MHz on 10 meters. Other radios do the same, making that frequency a particular hot spot.

And this complex operation leaves the operators completely in the dark about what part of the spectrum they're using, unless they carry a conversion chart with them and understand what it means. The people who buy the radios may have an inkling that there's something

illegal about their coverage, but few know the specifics, and nobody cares, since "everyone does it."

That's why the CB shop owner wishes they could modify the radio to *not* cover 10 meters. He said they warn buyers which channels not to use, but it doesn't mean much to the buyer. And they have to do mods, or the radios would be left on 10 meters, and they don't want to sell radios like that. They don't mind abetting an "incursion" in the space immediately above and below the legal 40 CB channels, but the 10 meter ham band means trouble.

There are a few CB users who know better. The true CB hobbyist knows what he's doing, and a few of the more arrogant ones just don't care if they end up on 10. And then there are some hams who have modified their Amateur equipment and continue to also operate around the CB channels (putting their Amateur license at risk).

Is anybody concerned about Riley? A letter like the one Derek got causes some ripples in the local pool, but for the most part, CB users have never heard of Riley, and couldn't care less.

Amateurs who are aware of the 10 meter incursion problem encourage more operation on the low end of 10. The problem is that this is cw territory, available only to those with General or higher class licenses.

How big a problem is incursions in the low end of 10? That's hard to say. When the band is open, you'll often hear a few AM signals, most of them speaking Spanish. But even through the current sunspot peak, all of 10 meters remains sparsely occupied by hams, and the cw segment is almost always devoid of hams unless there's a contest. We may not be losing it as far as the FCC is concerned, but practically, it's changing hands a little at a time.



The combination of E/A and HI puts the radio on 27.185 MHz, CB Channel 19. Switch to G/C HI and you're on 28.085 in the 10 meter band.

Training announcement

KENT COUNTY SEARCH AND RESCUE: GROUND SEARCH AND RESCUE TRAINING

Ground Search and Rescue Operations

Saturday May 19th, 2012 11:00AM - 2200

Sunday May 20th, 2012 0900-1600ish

**** (Times are subject to change with instructor availability) ****

Cost: \$50.00 per Person – Checks Payable to KCEST

****2012 Curriculum****

Topics Include:

Intro to Land Navigation

Search Equipment

Search Techniques

Night Search Techniques

Course Meets or Exceeds NFPA & NIMS requirements for Wilderness SAR

Pre Requisite Incident Command System (FEMA IS-100 & IS-200)

Location:

Kent County Sheriffs Department EOC Room

701 Ball Ave NE 49503

**** You will need to attend all days/times for certification**

**** There will be a limit of 30 participants in the GSAR operations training**

**** Must be in reasonably good physical shape for field operations part**

To reserve your seat:

www.vrm.cc/maysaro2012

\$\$\$

Stuff for Sale

\$\$\$

FOR SALE, Heathkit HF transceiver SB1400 + SB14001 power supply. Radio has FM 10 meter C.B. \$300. Contact KD8EOA on the repeater or on email at tomadams69@yahoo.com

Ten-Tec Hercules II solid state linear amplifier, with power supply and ten meter mod. Hardly used, part of an estate settlement. \$1000.00 or best offer. Contact Bill, KD8VP at kd8vp@juno.com



If you have something to sell please send an email with the details to kevinboxey@hotmail.com to be included in the Waveguide listing

LAPEER COUNTY AMATEUR RADIO ASSOCIATION

13th Annual

SHOP & SWAP

Sunday, August 19, 2012 at 8:00 AM to 11:30 AM

NEW LOCATION!

LAPEER WEST SENIOR HIGH SCHOOL, 170 MILLVILLE Rd. LAPEER, MI., 48446

(See map on back of flier)

*** Admission: \$5.00 ***

Tables: \$8.00 in advance &
\$10.00 at the door

Mail-in form for admission & tables at
<http://www.w8lap.com>

*** Free parking ***

*** All sales inside ***

*** COFFEE & DONUTS ***

*** Electricity available ***

*** Talk-in 146.620-- ***

100 Hz PL tone

Swap info: kc1bud@arri.net



VE Testing

Bring the original and a copy of 2 forms of ID, current license, & CSCE (if any). Contact Bob, N8NE for test details at 810-653-3856.

*** NO WALK-INS ***

2012 LCARA Swap Table & Ticket Order

Please Print

Name: _____ Call Sign: _____

Address: _____

City, State & Zip _____

Phone number () _____

Tables are \$8.00 each in advance and 10.00 each on the day of the swap.

Number of tables: _____ X \$8.00 = \$ _____

Number of Tickets: _____ X \$5.00 = \$ _____

Electricity: Y N **Limited & on first reserve basis**

For mail-in form go online at www.w8lap.com

Mail to: LCARA, box 12, Hadley, MI., 48440-0012



SWAP FROM THE WEST OR EAST

Take I-69 to **exit 153** turn left onto Lake Nepessing Rd..
Go north to Davison Rd. Davison is also West Genesee turn right.
Go to Millville turn left

FROM M-24

Take Genesee Rd. M-21 west to Millville. Turn north(right) on Millville.

Lapeer County Amateur Radio Assoc.
P.O. Box 12
Hadley,Mi., 48440-0012

L.C.A.R.A. MEMBERSHIP APPLICATION

PLEASE PRINT:

CALL SIGN: _____ NAME: _____

ADDRESS: _____

CITY ,STATE, AND ZIP: _____

PHONE : _____ LICENSE CLASS: _____

SKYWARN NO.: _____ RACES NO: _____

ARES MEMBER YES ___ NO ___ E-MAIL ADD.: _____

ARE YOU AN A.R.R.L. MEMBER: YES ___ NO ___

L.C.A.R.A. MEMBERSHIP IS \$12.00 PER YEAR, RENEWABLE EACH YEAR ON **OCTOBER. 1ST.** FAMILY MEMBERSHIP \$20.00. ASSOCIATE MEMBERSHIP \$4.00. IF YOU WISH AN AUTODIAL NUMBER FOR THE REPEATER THERE IS AN ADDITIONAL \$3.00 CHARGE. Financing available.

Lapeer County Amateur Radio Association

P.O. Box 12

Hadley, MI 48440-0012

Lapeer County Amateur Radio Association

P.O. Box 12
Hadley, MI 48440-0012

Officers

President: Kevin Boxey KB8TAR, 810-793-4986
Vice President: Tom Oliver KD8EBY, 810-247-3227
Treasurer: Bill Miller KD8VP, 810-797-5329
Secretary: Flo Haack KC8CAB, 810-793-2606

Committees and Appointees

Club Call Trustee W8LAP: Joe Medved KD8CIL
Repeater Assistants: KC1BUD, KD8EBY, KD8EOA
Skywarn Coordinator: Tom Oliver KD8EBY
Swap & Shop Chairpersons: Bill Miller KD8VP & Dan Bain KC1BUD
Meeting Refreshments: Bill Miller KD8VP
Newsletter Editor: Kevin Boxey KB8TAR
Field Day Chairman: **New volunteer needed**
Field Day Assistants: KD8EBY, KC1BUD, KB8TAR
Net Manager: Tom Oliver KD8EBY
Testing Coordinator: **Volunteer needed**
County EC: Tom Oliver KD8EBY
County PIO: Dan Bain KC1BUD
County AEC: Joe Medved KD8CIL
County AEC: Kevin Boxey KB8TAR

